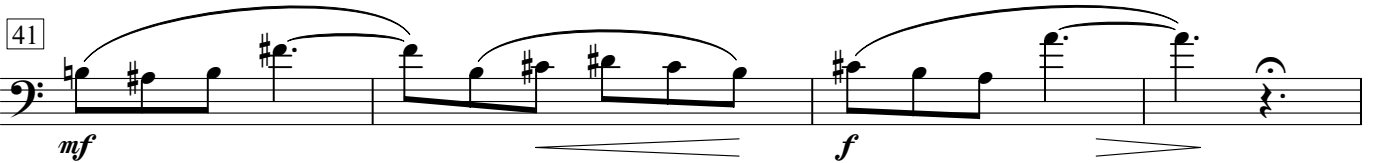
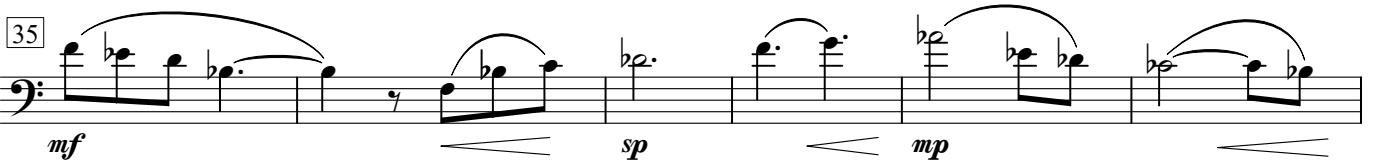
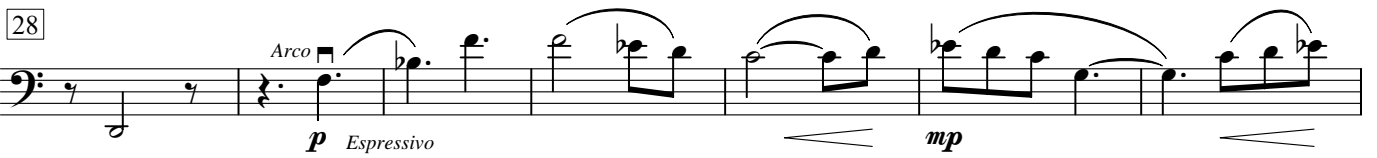


I. Preludio

Rubato ♩ = cca 54



51

Musical notation for measure 51, bass clef. The measure contains a sequence of notes: a quarter note G2, a quarter note F2, a quarter note E2, a quarter note D2, a quarter note C2, a quarter note B1, and a quarter note A1. A fermata is placed over the A1 note. The dynamic marking *mp* is positioned below the first two notes, and *mf* is positioned below the last two notes. The word *Arco* is written above the staff.

59

Musical notation for measure 59, bass clef. The measure contains a sequence of notes: a quarter note G2, a quarter note F2, a quarter note E2, a quarter note D2, a quarter note C2, a quarter note B1, and a quarter note A1. A fermata is placed over the A1 note. The dynamic marking *p* is positioned below the first two notes, and *mf* is positioned below the last two notes.

67

Musical notation for measure 67, bass clef. The measure contains a sequence of notes: a quarter note G2, a quarter note F2, a quarter note E2, a quarter note D2, a quarter note C2, a quarter note B1, and a quarter note A1. A fermata is placed over the A1 note. The dynamic marking *f* is positioned below the first two notes, *mf* is positioned below the last two notes, and *p* is positioned below the final note. The word *Rit.* is written above the staff.